



BD Rowa™ Conveyor system

Extremely short routes

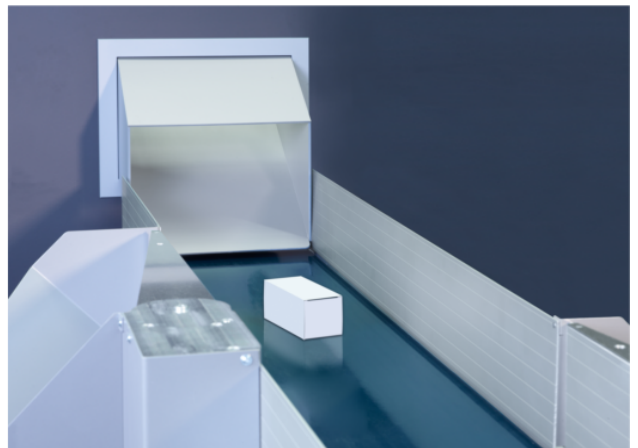
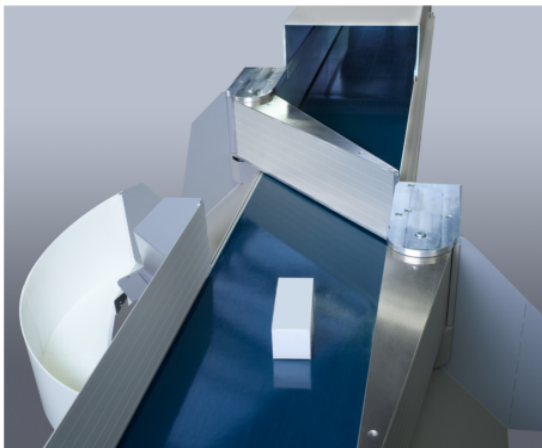
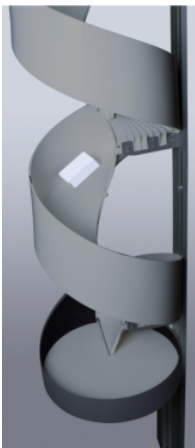
Technical data		
Conveyor Belt	Belt width	321 mm
	Nominal width between belts	285 mm
	Total width at the side with motor	397.5 mm
	Length	500 – 10,000 mm
	Height	217 mm (without motor) / 287 mm (with motor)
	Speed	variable up to 1.5 m/s
	Sound level	54.5 dB (A) (at a belt length of 10,000 mm and a speed of 1.2 m/s)
	Weight	approx. 50 kg (at a length of 2,000 mm; for each additional meter: approx. 15 kg)
Deflector	Power consumption	max. 400 W
	Dimensions	130 × 510 mm (H × L)
	Housing size	203 × 100 × 209 mm (L × W × H)
	Opening angle	45 °
Chute	Weight	7 kg
	Width inside	285 mm
	Width outside	297 mm
	Length	425/925/1,925 mm
	Inclination angle	30 – 45 °
	Weight	approx. 7 kg (at a length of 1,925 mm)
	Material	Polystyrene
	Conveyable packs	max. 230 × 140 × 100 mm (D × W × H)*

* Larger packs can also be transported (max. 500 × 250 × 145 mm [D × W × H] and max. weight 800 g). The chute must be straight, the conveyor belt at least 1 m long and only connected to other components at the end of the unit.

Technical data

Spiral Chute	Diameter	400 mm
	Flexure	90° per segment
	Height difference	150 mm per segment
	Weight	0.5 kg per segment
	Material	Polyamide
	Conveyable packs	max. 230 × 140 × 100 mm (<i>D × W × H</i>)*
Lift	Conveyor height	Standard up to 8.040 mm (up to 14,700 mm conveyor height on request)
	Outer dimensions of lift	258 × 299 mm (<i>W × L</i>)
	Weight for a lift with a length of 2,760 mm	approx. 34 kg
	Weight for each additional meter	approx. 6.5 kg
	Power consumption	500 W
	Material	Covering made of plastic
Vertical Conveyor	Conveyable packs	max. 230 × 140 × 100 mm (<i>D × W × H</i>)*
	Voltage	48 V
	Power consumption	max. 20 W
	Cycle time	10 seconds (at maximum height)
	Conveyor height	= Height variants (960 – 3,000 mm) (Pitch = 120 mm)
	External dimensions (L × W)	433 × 433 mm
	Weight at length 1,560 mm	89 kg
	Weight for length pitch 120 mm	4.1 kg
	Material	Covering made of wood
	Conveyable packs	max. 230 × 140 × 145 mm (<i>D × W × H</i>)

* Larger packs can also be transported (max. 500 × 250 × 145 mm [*D × W × H*] and max. weight 800 g). The chute must be straight, the conveyor belt at least 1 m long and only connected to other components at the end of the unit.



Becton Dickinson Rowa Germany GmbH, Rowastraße, 53539 Kelberg, Germany
+49 2692 92 06 0 tel, +49 2692 92 06 1299 fax

bd.com/rowa



BD, the BD Logo and BD Rowa are trademarks of Becton, Dickinson and Company or its affiliates.
All other trademarks are the property of their respective owners. © 2024 BD. All rights reserved. Feb-2024, BD-53360