



Rowa ProLog™ & Rowa iProLog™

Fully automatic input

Rowa ProLog™ / iProLog™ – input at the touch of a button

Rowa's fully automatic stock input allows economic potential to be tapped thanks to intelligent software add-on functions. Available as an external or fully integrated solution.

Manually inputting incoming goods ties up staff resources. Manual steps required for new deliveries are automated fully with Rowa ProLog or Rowa iProLog. Operation is ingeniously easy: simply tip out the delivery box and press "Start".

The system takes care of the rest – fully automatically and around the clock. Greater precision is ensured in the stock room thanks to the ability to read 2D bar codes and identify expiry dates (after single teaching).

-
- ✓ **Fully automated stock input**
No manual activities. ProLog / iProLog separates, measures, scans, and inputs. Semi-automatic stock input is possible directly at the system in parallel.
 - ✓ **Automatic expiry date input**
Optional OCR technology recognizes and processes the printed or stamped expiry date automatically
 - ✓ **Round packs can also be input**
Both square and round packs can be processed (OCR recognition not possible with round packs).
 - ✓ **Low maintenance**
Pack information is available to all pharmacies thanks to a web-based cloud solution.
 - ✓ **Available as an external or integrated solution**
Integrated in the Rowa Vmax™ or as an external system. Connection via conveyor technology (e.g. air lock delivery gateway, other floor).
 - ✓ **The Rowa Vmax Overnight function**
Sorts out non-readable packs to a box and continues working. Simple next day reprocessing possible.





Rowa iProLog™: the internal solution

The Rowa iProLog allows goods to be input directly into the Rowa Vmax™ completely automatically. Semi-automatic input via the input belt is also possible at the same time. Thanks to this integrated solution, you only have one device which handles all input tasks for you.



Rowa ProLog™: the external solution

With the external Rowa ProLog, the system can be loaded from almost anywhere: directly into the system, remotely from the system using Rowa conveyor technology, and even from a different story or goods inward gate. This ensures maximum flexibility for adaptation to your workflows.

Technical data

		Rowa ProLog (external) und Rowa iProLog (internal)	
Input capacity	Square packages only	Approx. 150–200 packages per hour	
	Square and round packages	Approx. 120 packages per hour	
	With OCR function (square packages only)	Approx. 120 packages per hour	
Packages which can be input	Square packages		
	Min. package dimensions (D×W×H)	35 × 15 × 15 mm	
	Max. package dimensions (D×W×H)	230 × 145 × 140 mm	
	Weight	5–800 g	
	Round packages (OCR recognition not possible)		
	Min. package dimensions	Dia. 45 mm, height: 35 mm	
	Max. package dimensions	Dia. 140 mm, height: 145 mm	
	Weight	5–800 g	
Sound level	The average sound pressure level Lp,m is 55,6 dB (A) (ProLog external with Buffer Belt)		
Bar codes	Recognition and processing of CPN, CPN8, EAN, and 2D bar codes		
Options	Recognition and processing of printed or punched expiry date. (OCR function) To access the cloud solution an Internet connection is required.		
		Rowa ProLog (extern)	Rowa iProLog (intern)
Available for		Rowa Vmax 130 Rowa Vmax 160 Rowa Vmax 210 Rowa Vmax 320	Rowa Vmax 160 with frontal input as of a length of 3.50 m Rowa Vmax 320
Input options		Directly on the system	Integrated in the system
		Separated from Rowa by conveyor technology	In the Rowa on either the right or left (opposite the input belt)
		Remote input from another story via spiral chute	Input always from front
Capacity		240 packages / meter buffer belt	Approx. 250 packages
Buffer belt	Total height	Approx. 0.9 m	
	Width	0.5 m	0.29 m
	Length	1.00 / 1.50 / 2.00 / 2.50 / 3.00 / 4.00 / 5.00 / 6.00 / 7.00 / 8.00 m	
		With +0.24 m grip	
Loss of capacity Rowa Vmax	No loss of capacity in the automated system due to external device		
	Approx. 1,700 packages		
Dimensions (L × W × H)	1,680 × 531 × 1,625 mm		min. 2,440 × 348 × 1,535 mm
Weight (without belts)	Approx. 300 kg		Approx. 145 kg
Electrical Parameter	2A, 230V, 50/60 Hz		1A, 230V, 50/60 Hz
Power consumption	Utilization 100 %	211 W	150 W
	Utilization 0 %	161 W	88 W

Automatic expiry date recognition

More safety – More control – Less time and effort

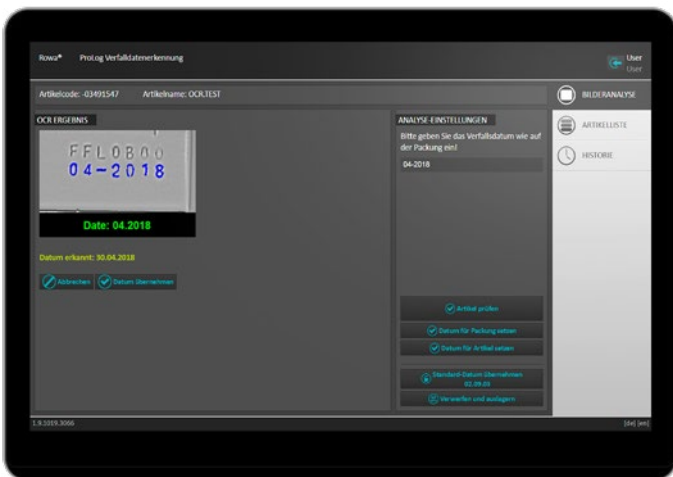
Automatic recognition of expiry dates (OCR ProLog) ensures an even more precise overview of your stock. The OCR option not only makes it easier to keep track of items with an upcoming expiry date, but also increases dispensing safety. At the same time, the manual effort required for stock maintenance is reduced to a minimum thanks to recognition of the actual expiry dates. This translates to more time that can be used for other duties.

Instructions for reading the expiry dates on medication packaging are stored on a shared cloud. It is already possible to localize more than 90% of the expiry dates on packaging in Germany. Users can add new or unrecognized packages simply and just once and then make them available to all other users via the cloud.

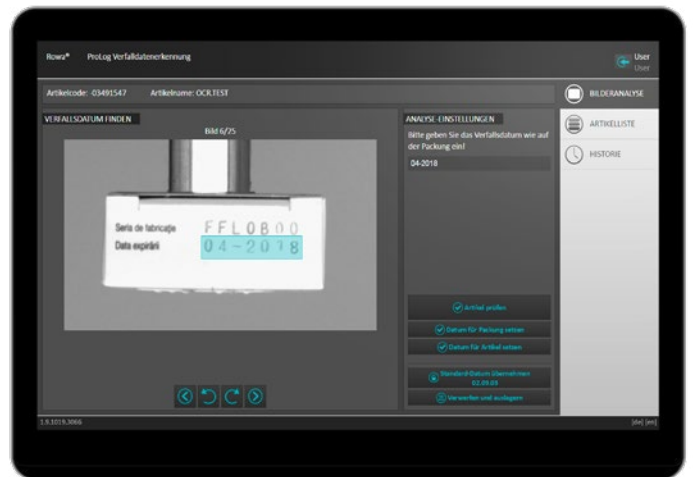
The OCR ProLog option is available for ProLog and iProLog. Retrofitting of existing systems is also possible.

Your advantages at a glance

- ✔ **Increased dispensing safety**
thanks to real remaining shelf life.
- ✔ **Added control for incoming goods**
Short shelf lives are identified directly.
- ✔ **Reduced work requirements in the back office**
Packaging now only touched once – when it's sold.
- ✔ **Cost savings**
thanks to a more precise overview of the stockroom.
- ✔ **Simple handling**
All users benefit from a cloud.



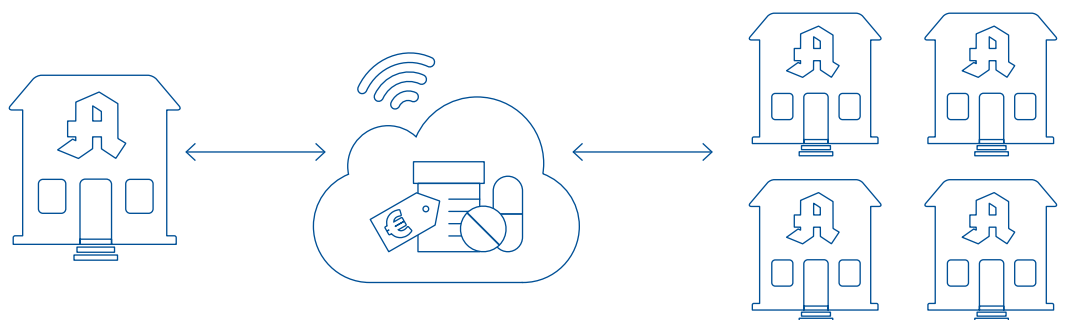
Automatic date recognition



Manual date localization

Cloud solution

Once learned, the packages are stored in a web-based cloud solution upon recognition where they are then available to all users.



Becton Dickinson Rowa Germany GmbH, RowastraÙe, D-53539 Kelberg
+49 2692 92 06 0 tel, +49 2692 92 06 1299 fax

bd.com/rowa

